

20"
Service
Clearance

ANSI 600# BLIND CLOSURE

4" ANSI 600# RF Flanges

1/4" FNPT Pressure Taps

9" DIA.

20"

FLOW

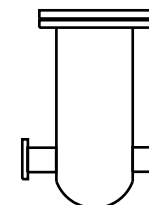
LIFT LUG

1/2" FNPT VENT

8"

1/2" FNPT DRAIN

USUAL MOUNTING
POSITION



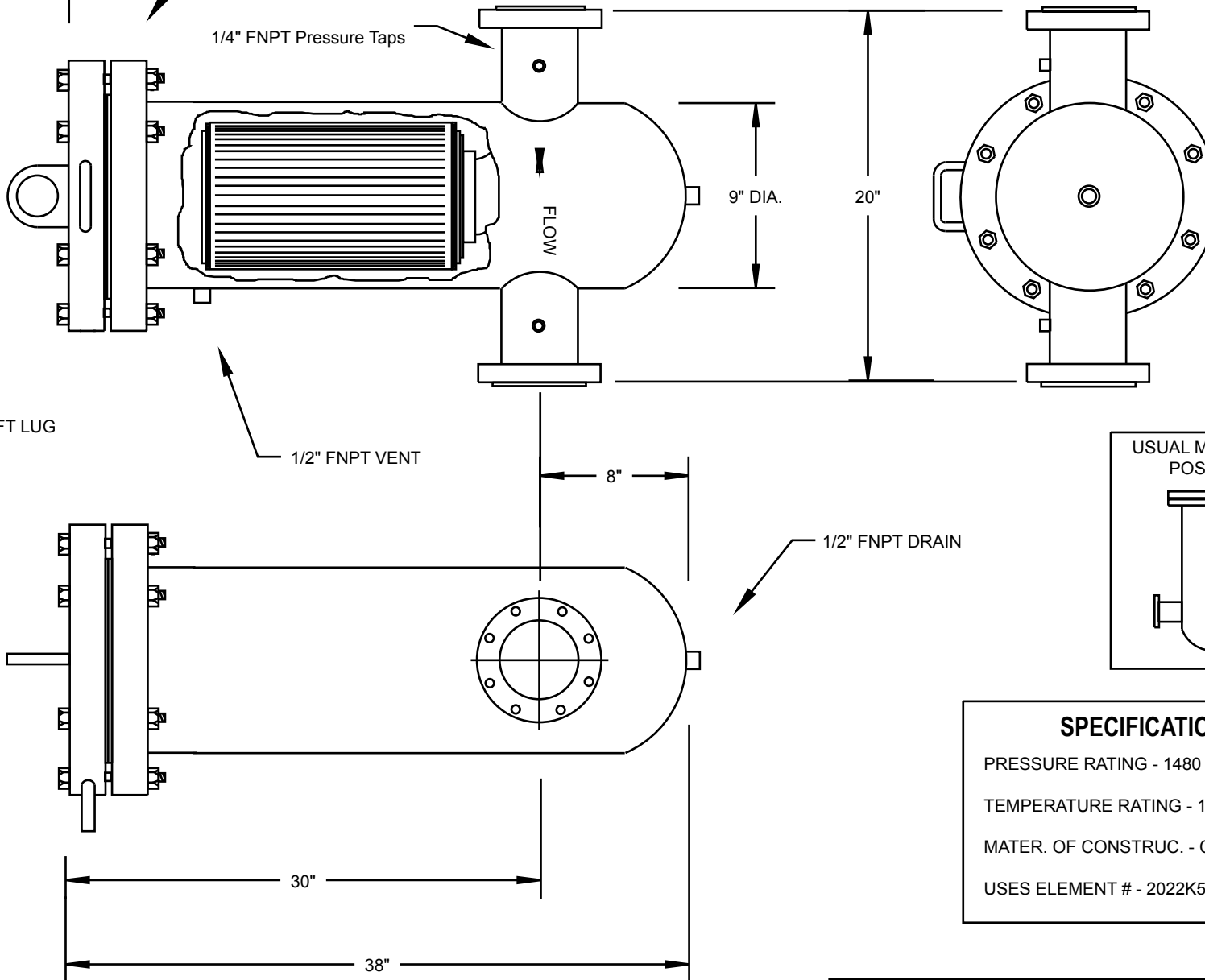
SPECIFICATIONS

PRESSURE RATING - 1480 PSI

TEMPERATURE RATING - 100 F

MATER. OF CONSTRUC. - CARBON STEEL

USES ELEMENT # - 2022K5



FilterFab
MANUFACTURING CORPORATION
MODEL F4-1480F