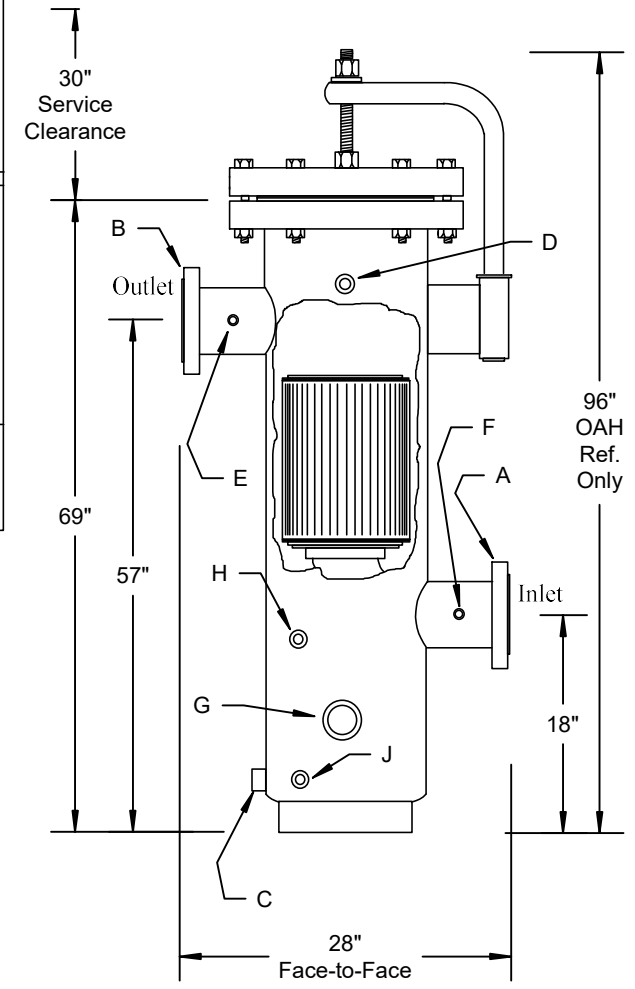
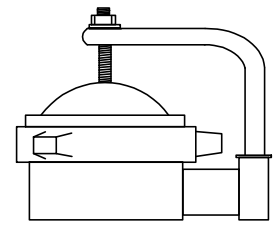


VESSEL DATA SHEET

Design Parameters		Schedule of Openings	
Pressure, Max. at Inlet	1,480 psi	Service	See Dwg.
Temperature	100 F	Inlet	A 1 8" 600# ANSI Flange
Corrosion Allow.	0.00"	Outlet	B 1 8" 600# ANSI Flange
Code Standard	ASME Sect. VIII, Div. 1	Drain	C 1 1" 3000# Coupling
Stamped?	Optional	Vent	D 1 1" 3000# Coupling
Operating Parameters		Press. Tap	E 1 1/4" 3000# Coupling
Pressure, Max.	1,480 psi	Press. Tap	F 1 1/4" 3000# Coupling
Temperature	100 F	Float Switch	G 1 2" 3000# Coupling
Gas Flow Rate	8,000,000 scfh @ 1,480 psi	Sight Glass	H 1 1/2" 3000# Coupling
Gas Specific Gravity	0.60	Sight Glass	J 1 1/2" 3000# Coupling
Vessel Testing		Materials of Construction	
Hydrotest Pressure	2,220 psi	Shell	SA106B 0.500"
Pneumatic Test Pressure	N/A	Bottom Head	SA234WPB 0.500"
Radiograph	Optional with U-Stamp	In/Out Piping	SA1065B 0.432"
Magnetic Particle	Optional with U-Stamp	Flanges	SA105 ANSI 600#
Dye Penetrant	Optional with U-Stamp	Couplings	SA105 3000#
Filtration Performance		Closure Gasket	Spiral Wound Gasket
Filter Element P/N	#2490K907	Ring Base	SA53B 0.188"
Type of Filter Media	Borosilicate Fiberglass	Shipping Information	
Retention Rating	0.3 micron	Total Weight	2,400#
Efficiency of Retention	99.9%		
No. of Elements	1		
Design Clean Press. Drop	0.33 psid		
Changeout Press. Drop	10 psid		
Closure Specifications			
Type	Blind Flange		
Gasket Type	Fiber Type, #16-600SW		
Type of Lifting Assistance	Davit Arm		
Internal Finish			
Sandblast	Light		
Oil Coat	None		
Glyptol Coat	None		
External Finish			
Sandblast	SP-10 Commercial		
Finish Coat	(2) Coats PPG Grey Enamel Primer/Finish		
Sump Capacity	14 gallons		



Optional Threaded
Quick Opening
Modco Closure



FilterFab
MANUFACTURING CORPORATION
Model C8-1480F Coalescing Filter